

BALI USV200

Autonomous bathymetry



Unparalleled performance on water

Hydrojet propulsion ideal for low depth sounding

Full day operation (2 knots)

100% automated bathymetry



GEOD® powered

Centimeter RTK or SBAS multiconstellation GNSS

Connected (UHF, GSM, Wifi)

Single Frequency (SF) and Dual Frequency (DF)

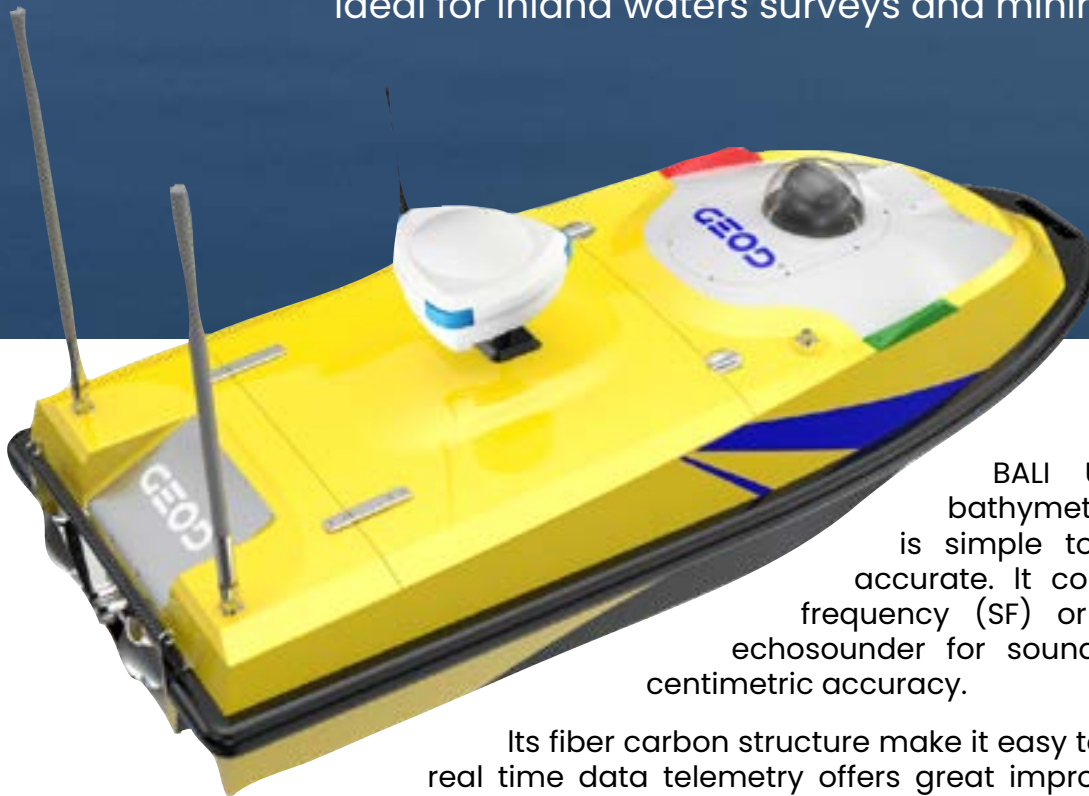


Robust and lightweight

One surveyor can operate it

Ultra-resistant carbon fiber hull

Ideal for inland waters surveys and mining industry



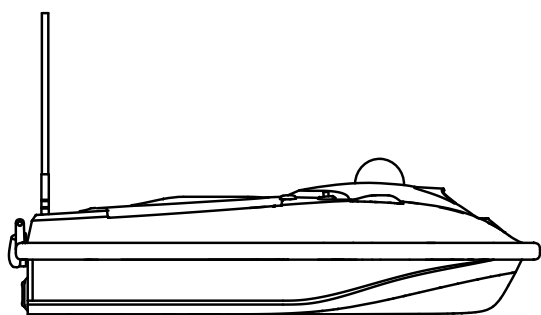
BALI USV200 is a complete bathymetric survey solution, which is simple to operate and extremely accurate. It comes with either a single frequency (SF) or a dual frequency (DF) echosounder for sounding up to 200m with a centimetric accuracy.

Its fiber carbon structure make it easy to carry. The auto-pilot and real time data telemetry offers great improvements in conducting a survey and a secure environment for the operator.

Technical characteristics

| | |
|---|---|
| Positioning | GPS, Glonass, Galileo and BeiDou dual-frequency RTK (1cm) - SBAS (0.5m) |
| Sounding* <ul style="list-style-type: none"> 450kHz frequency 200kHz frequency 30kHz frequency | Range : 0,15m - 100m Accuracy : 0.2% of depth range or 2cm Angle beam : 5° Range : 0,4m - 200m Accuracy : 0.2% of depth range or 2cm Angle beam : 9° Range : 0,4m - 200m Accuracy : 0.2% of depth range or 2cm Angle beam : 26° |
| Communication | GSM Long-range UHF (403-473MHz) Wireless LAN (2.4GHz) |
| I/O interface | Ethernet Wifi |
| User interface | Full system configuration Mission planning Real time monitoring Real time navigation Bathymetric data cleaning |
| Data format <ul style="list-style-type: none"> Position Sounding | Latitude, Longitude, Altitude (WGS84) Water depth (meter) |
| Data output | NMEA0183 |
| Software interface | Web browser (iOS, Android, Windows) |

*Different configurations available on request



USV characteristics

| | |
|-----------------------------|-----------------|
| Hull material | Carbon fiber |
| Size | 160 x 70 x 40cm |
| Weight | 32kg |
| Draft | 15cm |
| Engine | Hydrojet |
| Speed | 5m/s max. |
| Endurance (1.5m/s speed) | 6h minimum |
| Remote controller range | 1km |
| Wireless base station range | 2km |

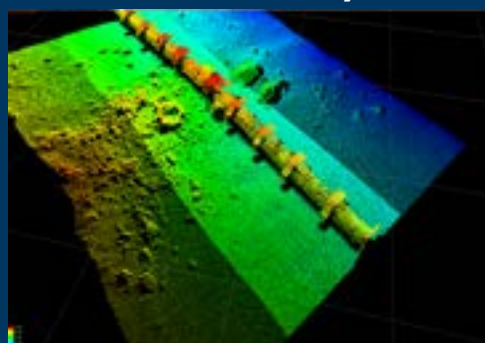
Standard delivery

- 1 USV
- 1 rechargeable battery
- 1 wireless base station
- 1 remote controller
- 1 BALI (smart antenna + echosounder)
- 1 transit case
- 1 PTZ Camera
- Collision Avoidance
- Multimission

Optional delivery

- Additional batteries
- BALI stand-alone mounting kit

USV platform is compatible with multibeam system*



*additional option